

APEM

www.apem.com

THE XD SERIES RT HANDLE IS PARTICULARLY SUITED FOR APPLICATIONS WHERE ERGONOMICS ARE AS IMPORTANT AS TECHNICAL PERFORMANCE.

XD Series: RT handle

Optimum ergonomics for a comfortable user experience

PANEL SWITCHES

PCB SWITCHES

LED INDICATORS

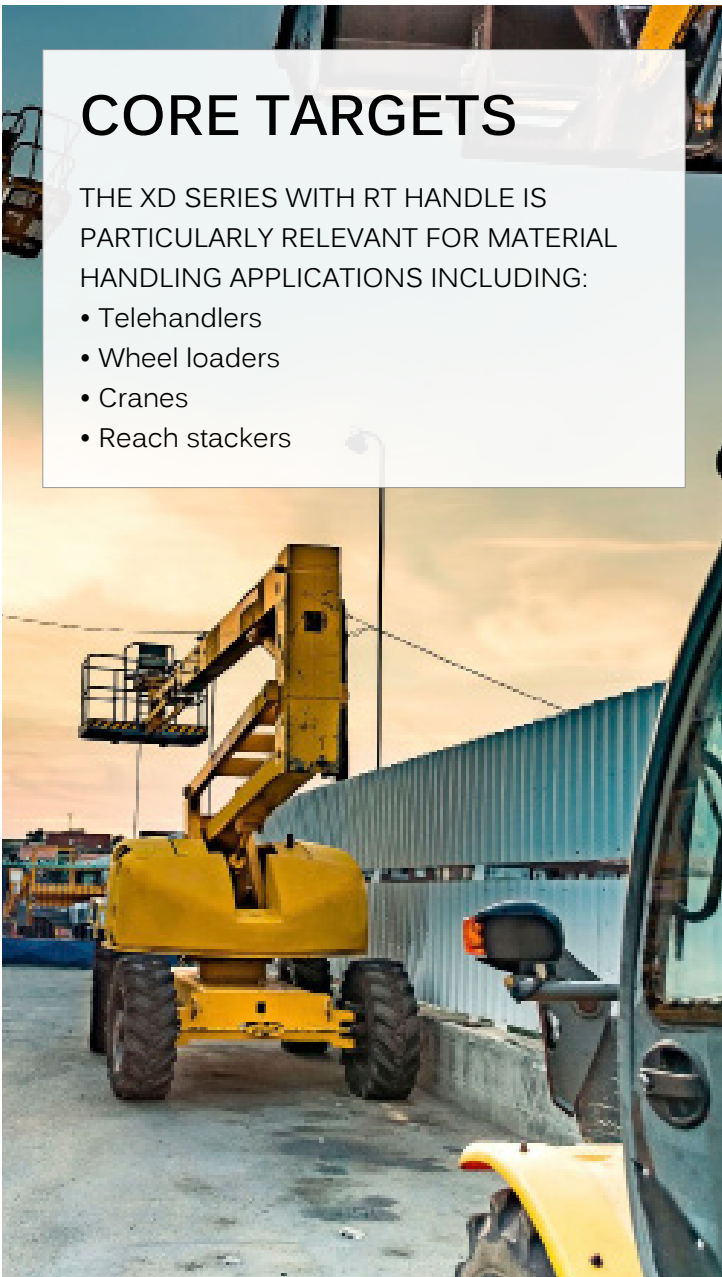
JOYSTICKS

PANEL SOLUTIONS

CORE TARGETS

THE XD SERIES WITH RT HANDLE IS PARTICULARLY RELEVANT FOR MATERIAL HANDLING APPLICATIONS INCLUDING:

- Telehandlers
- Wheel loaders
- Cranes
- Reach stackers



XD RT SERIES

COMFORTABLE RIGHT HANDED
OPERATION FOR RUGGED ENVIRONMENTS

CUSTOMER BENEFITS

- The XD series RT handle features both front and rear facing plates that may be configured to the user's requirements. The front facing top plate may be configured with up to six IX series pushbuttons and two HR series rollers.
- The RT handle is Sil1 or Sil2 capable, depending on the specified components. Since the European Machinery Directive 2006/42/EC has come into effect, vehicle manufacturers must also comply with IEC 62061 and ISO 13849 standards to increase functional safety.

FOCUS TECHNOLOGY

- The XD series is a rugged Hand Grip joystick engineered for demanding vehicle applications. Featuring redundant Hall effect sensors to provide more than 10 million operations, it measures just 60mm below panel yet withstands horizontal loads up to 400lbf. The XD series may be specified with CANbus J1939 or CANopen outputs and is considered Sil2 compatible. The result is a compact yet robust joystick ideally suited for off-highway vehicles and machinery.

END-USER EXPERIENCE

- The XD series RT handle features optimum ergonomics. The right hand specific design utilizes a design allowing the user to easily reach all components with the sweep of a thumb.

CUSTOMIZATION POSSIBILITIES

- The RT handle features two configuration plates that may be customized for specialized applications.
- The RT handle features IX series pushbuttons and HR series rollers as standard.
- For custom options, the RT may be specified with a wide range of field proven components including IP and IA series pushbuttons. Tooling and NRE will likely apply.

TECHNICAL FEATURES

- Configured with APEM's IX, HR and NV series
- Sil2 compliant
- IP67 above panel sealing
- CAN bus protocols



[Visit the product web page](#)

[Download the datasheet](#)

CONTACTS

BENELUX +32 27 25 05 00 - sales@apem.be

CHINA +86 21 6076 1355 - apem@apem.com.cn

FRANCE +33 563931498 - commercial@apem.fr

GERMANY +49 8945991133 - info@apem.de

ITALY +39 0172 74 3170 - apem.italia@apem.it

SWEDEN +46 8 626 38 00 - info@apem.se

UNITED KINGDOM +44 1 844 202400 - sales@apem.co.uk

USA - HAVERHILL 1-978-372-1602 - info@apem.com

USA - VISTA 1-760-598-2518 - info@apem.com



www.apem.com